

TREAT AVE

AVENIDA TREAT

CREATE AN ACTIVATED DESTINATION FOR THE COMMUNITY
CREAR UN DESTINO COMUNITARIO ACTIVADO



CREATE A STAGE FOR DIVERSE COMMUNITY GATHERINGS AND EXPERIENCES
CREAR UN "ESTRADO" PARA REUNIONES Y EXPERIENCIAS DE UNA COMUNIDAD DIVERSA



KEEP IT SIMPLE | FLEXIBLE | TIMELESS
PLAN SENCILLO | FLEXIBLE | INTEMPORAL



PRIORITIZE COMMUNITY USE | BIKE & PEDESTRIAN
PRIORIZAR EL USO DE LA COMUNIDAD | CONECTIVIDAD PARA PEATONES Y CICLISTAS | VISIBILIDAD



AVOID COSTLY CONTAMINATED SOILS MITIGATION
EVADIR MITIGACIÓN COSTOSA DEL SUELO CONTAMINADO



DEVELOP A PLAN ACHIEVED OVER TIME | COMPATIBLE WITH SFPUC EFFORTS
DESARROLLAR UN PLAN CON ÉXITO A LO LARGO DEL TIEMPO | COMPATIBLE CON EL PROYECTO DE SFPUC



PLANNING & DESIGN PRINCIPALS FUNDAMENTOS DE PLANEACIÓN Y DISEÑO

TREAT AVENUE GREEN
SPACE CONCEPTS
CONCEPTOS DE ESPACIO VERDE - TREAT AVE.
SAN FRANCISCO, CALIFORNIA





- ① PARALLEL PARKING
- ② SIDEWALK AND BIKE LANE
- ③ COMMUNITY GARDEN PLANTERS
- ④ DECOMPOSED GRANITE PAVING OVER EXIST. ASPHALT
- ⑤ SYNTHETIC LAWN DOG PARK
- ⑥ SYNTHETIC LAWN KIDS PLAY SPACE
- ⑦ SYNTHETIC LAWN PING PONG | GAMES SPACE
- ⑧ SYNTHETIC LAWN SCREEN WALL
- ⑨ SYNTHETIC LAWN EXERCISE AREA, PURPLE PATCH SPILLOVER
- ⑩ MARKET TENTS
- ⑪ FOOD TRUCKS
- ⑫ THE LONG BAR
- ⑬ PARK SEATING
- ⑭ PARK IDENTITY WALL AND TRASH ENCLOSURE

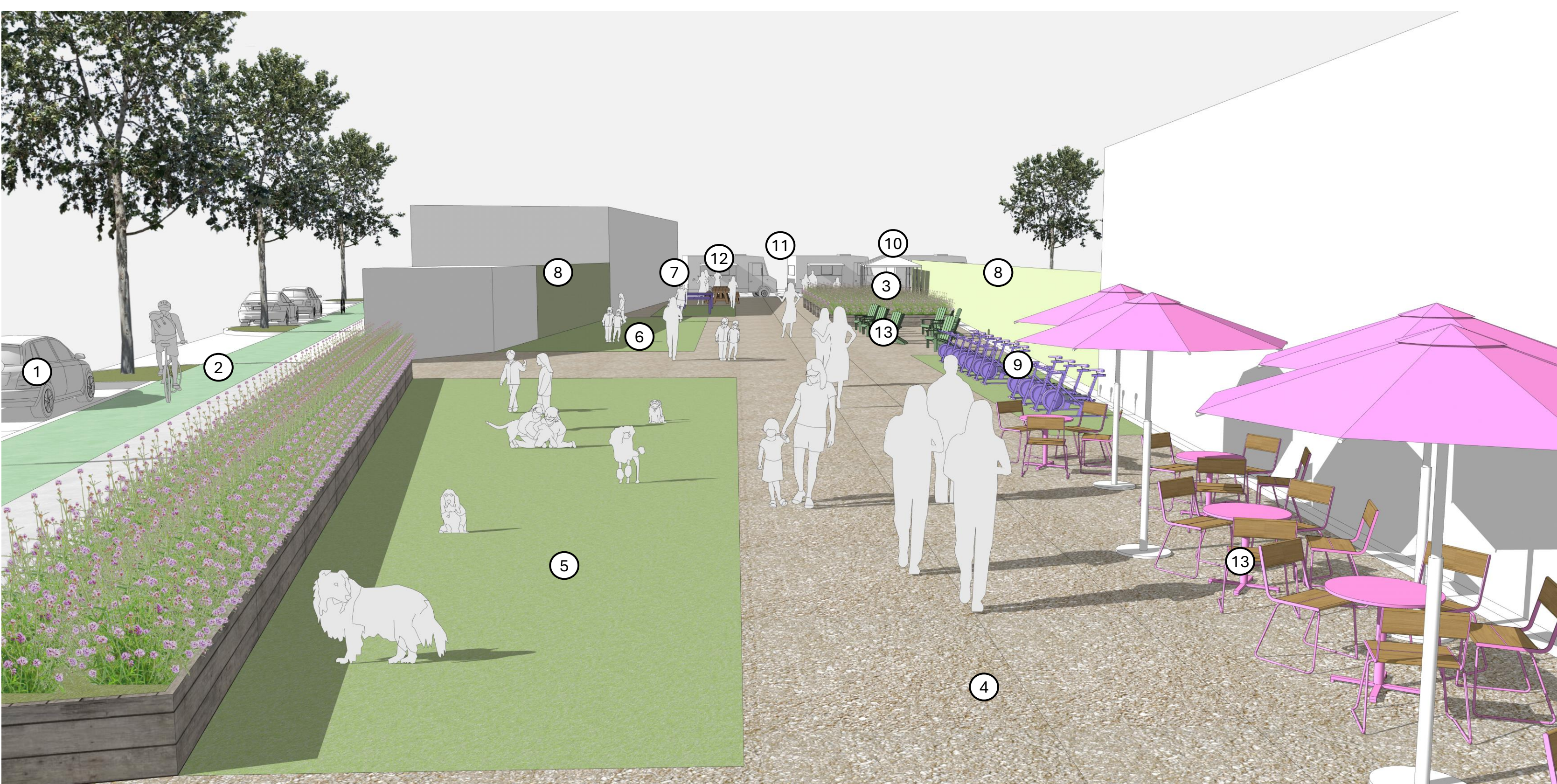
COSTS \$2.5M TO \$3M
 TIME 2 TO 3 YRS



ACTIVITIES



REFERENCE



PERSPECTIVE

- ① PARALLEL PARKING
- ② SIDEWALK AND BIKE LANE
- ③ COMMUNITY GARDEN PLANTERS
- ④ DECOMPOSED GRANITE PAVING OVER EXIST. ASPHALT
- ⑤ SYNTHETIC LAWN DOG PARK
- ⑥ SYNTHETIC LAWN KIDS PLAY SPACE
- ⑦ SYNTHETIC LAWN PING PONG | GAMES SPACE
- ⑧ SYNTHETIC LAWN SCREEN WALL
- ⑨ SYNTHETIC LAWN EXERCISE AREA, PURPLE PATCH SPILLOVER
- ⑩ MARKET TENTS
- ⑪ FOOD TRUCKS
- ⑫ THE LONG BAR
- ⑬ PARK SEATING
- ⑭ PARK IDENTITY WALL AND TRASH ENCLOSURE

1. SURFACE SUPERFICIE

STRATEGY – ADD IMPROVEMENTS TO THE SURFACE CREATING AN ACTIVATED COMMUNITY DESTINATION WITH A MODEST INVESTMENT. ELEMENTS ARE EASILY MOVABLE FOR RELOCATION IF AND WHEN SFPUC INFRASTRUCTURE WORK TAKES PLACE

ESTRATEGIA- AGREGAR MEJORAS A LA SUPERFICIE CREANDO UN DESTINO COMUNITARIO ACTIVADO CON UNA INVERSIÓN MODESTA. LOS ELEMENTOS SON FÁCILES DE MOVER Y TRASLADAR SI Y CUANDO EL PROYECTO DE INFRAESTRUCTURA DE SFPUC SE LLEVA A CABO

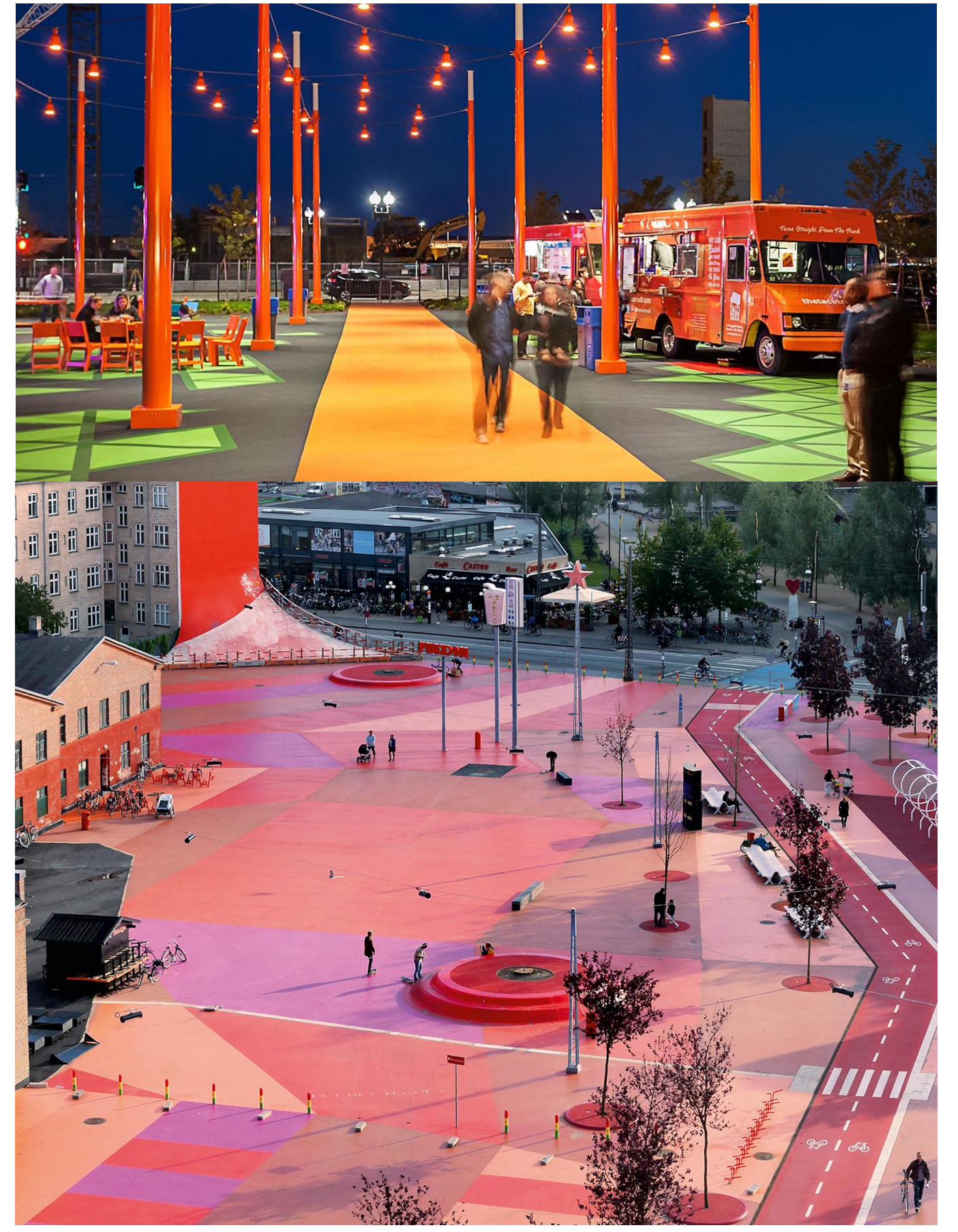
TREAT AVENUE GREEN
 SPACE CONCEPTS
 CONCEPTOS DE ESPACIO VERDE – TREAT AVE.
 SAN FRANCISCO, CALIFORNIA



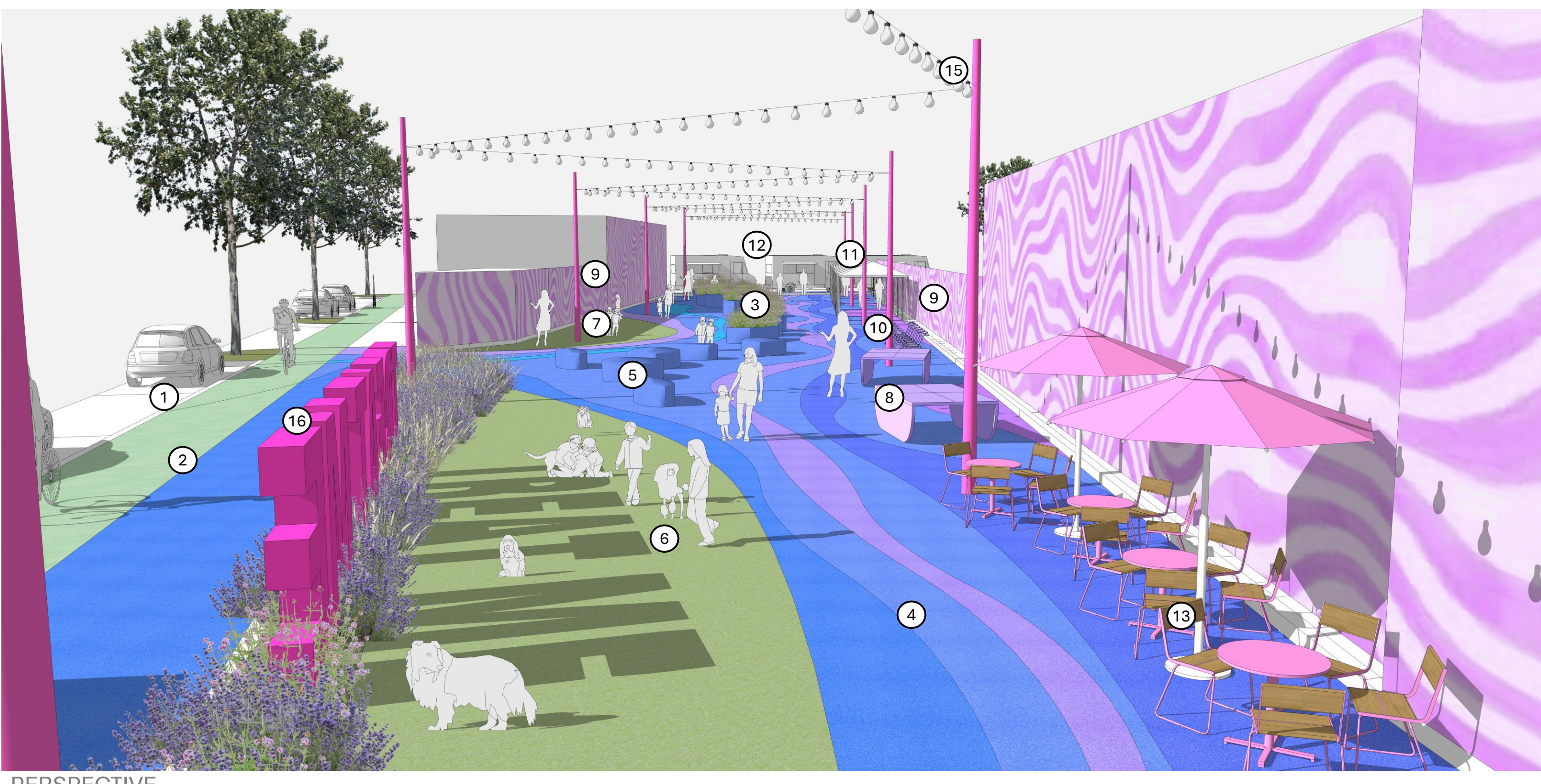


- ① PARALLEL PARKING
- ② SIDEWALK AND BIKE LANE
- ③ COMMUNITY GARDEN PLANTERS
- ④ ASPHALT OVERLAY PAINTED
- ⑤ PAINTED SEATING ELEMENTS
- ⑥ SYNTHETIC LAWN DOG PARK
- ⑦ SYNTHETIC LAWN KIDS PLAY SPACE
- ⑧ PING PONG | GAMES SPACE
- ⑨ ARTWALL - SCREEN WALL
- ⑩ EXERCISE AREA, PURPLE PATCH SPOILOVER
- ⑪ MARKET TENTS
- ⑫ FOOD TRUCKS
- ⑬ PARK SEATING
- ⑭ ARTWALL AND TRASH ENCLOSURE
- ⑮ FESTUNE CATENARY LIGHTING
- ⑯ PARK IDENTITY SIGNAGE

COSTS \$4M TO \$4.5M
 TIME 2 TO 3 YRS



REFERENCE



PERSPECTIVE

- ① PARALLEL PARKING
- ② SIDEWALK AND BIKE LANE
- ③ COMMUNITY GARDEN PLANTERS
- ④ ASPHALT OVERLAY PAINTED
- ⑤ PAINTED SEATING ELEMENTS
- ⑥ SYNTHETIC LAWN DOG PARK
- ⑦ SYNTHETIC LAWN KIDS PLAY SPACE
- ⑧ PING PONG | GAMES SPACE
- ⑨ ARTWALL - SCREEN WALL
- ⑩ EXERCISE AREA, PURPLE PATCH SPOILOVER
- ⑪ MARKET TENTS
- ⑫ FOOD TRUCKS
- ⑬ PARK SEATING
- ⑭ ARTWALL AND TRASH ENCLOSURE
- ⑮ FESTUNE CATENARY LIGHTING
- ⑯ PARK IDENTITY SIGNAGE

2. ARTSTREET SENDERO ARTÍSTICO

STRATEGY – ASPHALT OVERLAY EXISTING PAVING AND PAINT A SUPERGRAPHIC EMULATING MISSION CREEK. ADD IMPROVEMENTS TO THE SURFACE CREATING TO ACTIVATE A COMMUNITY DESTINATION . LIGHTING EXTENDS PARK HOURS AND PUBLIC SAFETY. ELEMENTS ARE EASILY RELOCATED IF AND WHEN SFPUC INFRASTRUCTURE WORK TAKES PLACE.

ESTRATEGIA – REVESTIMIENTO DEL PAVIMENTO CON UN MURAL SUPERFICIAL QUE IMITE EL ARROYO “MISSION”. AGREGAR MEJORAS A LA SUPERFICIE CREANDO UN DESTINO COMUNITARIO ACTIVADO. EL ALUMBRADO PROLONGARÁ LAS HORAS HÁBILES DEL PARQUE Y MEJORARÁ SEGURIDAD PÚBLICA. LOS ELEMENTOS SON FÁCILES DE MOVER Y TRASLADAR SI Y CUANDO EL PROYECTO DE INFRAESTRUCTURA DE SFPUC SE LLEVA A CABO

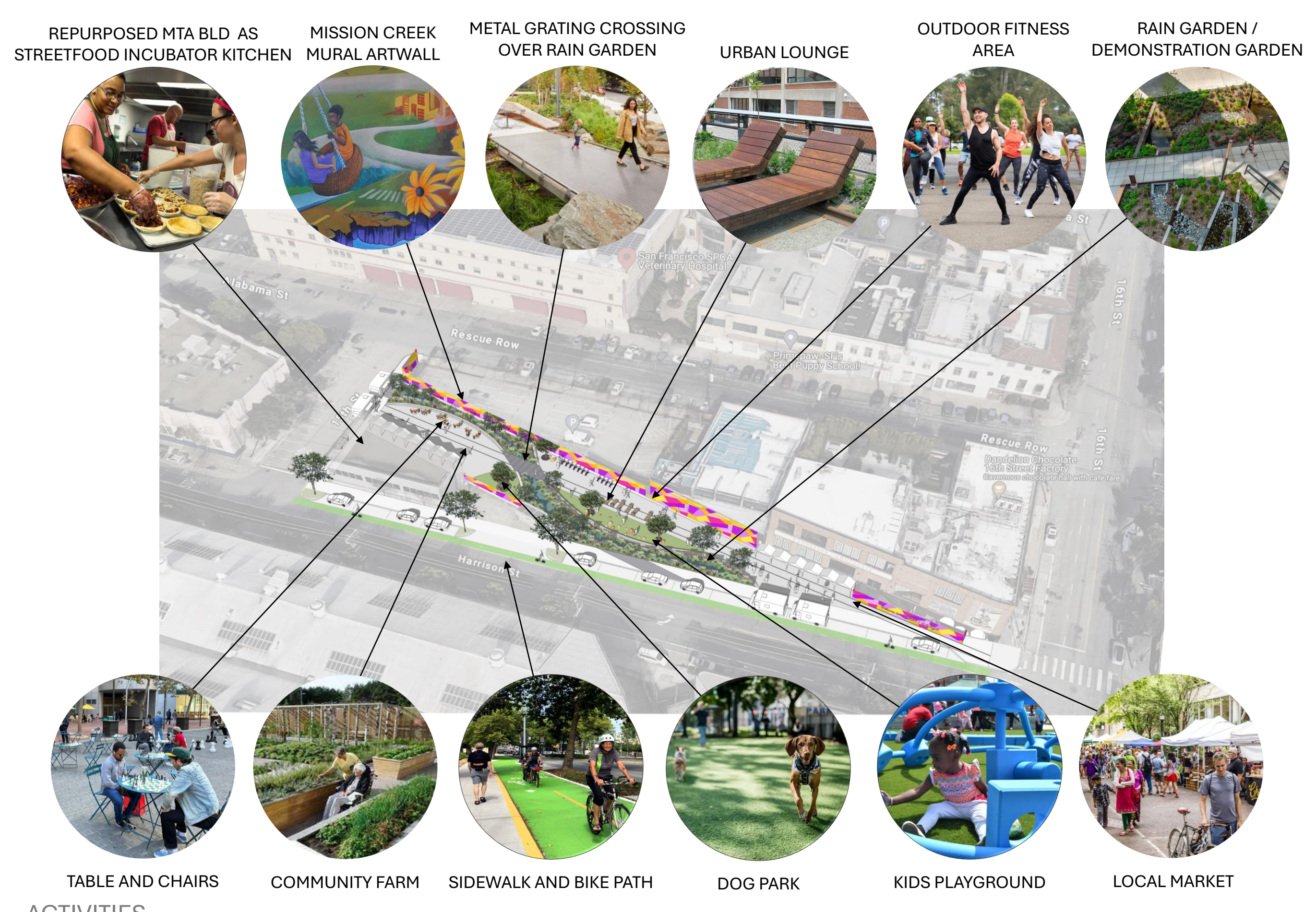
TREAT AVENUE GREEN
 SPACE CONCEPTS
 CONCEPTOS DE ESPACIO VERDE – TREAT AVE.
 SAN FRANCISCO, CALIFORNIA





- ① PARALLEL PARKING
- ② SIDEWALK
- ③ BIKE LANE
- ④ MISSION CREEK BIORETENTION
- ⑤ BRIDGE
- ⑥ COMMUNITY GARDEN PLANTERS AND SEATING ON RAILS
- ⑦ PERMEABLE PLAZA PAVING
- ⑧ SYNTHETIC LAWN KIDS PLAY SPACE
- ⑨ SYNTHETIC LAWN DOG PARK
- ⑩ ARTWALL - SCREEN WALL
- ⑪ EXERCISE AREA, PURPLE PATCH SPILLOVER
- ⑫ MARKET TENTS
- ⑬ FOOD TRUCKS
- ⑭ PARK SEATING
- ⑮ ARTWALL AND TRASH ENCLOSURE
- ⑯ PARK LIGHTING
- ⑰ PARK IDENTITY SIGNAGE
- ⑱ REPURPOSED MTA TIRE SHOP INTO INCUBATOR SPACE FOR LOCAL CHEFS | STREETFOOD

COSTS \$5.5M TO \$6M
TIME 3 TO 4 YRS



- REPURPOSED MTA BLD AS STREETFOOD INCUBATOR KITCHEN
- MISSION CREEK MURAL ARTWALL
- METAL GRATING CROSSING OVER RAIN GARDEN
- URBAN LOUNGE
- OUTDOOR FITNESS AREA
- RAIN GARDEN / DEMONSTRATION GARDEN
- TABLE AND CHAIRS
- COMMUNITY FARM
- SIDEWALK AND BIKE PATH
- DOG PARK
- KIDS PLAYGROUND
- LOCAL MARKET



REFERENCE



- ① PARALLEL PARKING
- ② SIDEWALK
- ③ BIKE LANE
- ④ MISSION CREEK BIORETENTION
- ⑤ BRIDGE
- ⑥ COMMUNITY GARDEN PLANTERS AND SEATING ON RAILS
- ⑦ PERMEABLE PLAZA PAVING
- ⑧ SYNTHETIC LAWN KIDS PLAY SPACE
- ⑨ SYNTHETIC LAWN DOG PARK
- ⑩ ARTWALL - SCREEN WALL
- ⑪ EXERCISE AREA, PURPLE PATCH SPILLOVER
- ⑫ MARKET TENTS
- ⑬ FOOD TRUCKS
- ⑭ PARK SEATING
- ⑮ ARTWALL AND TRASH ENCLOSURE
- ⑯ PARK LIGHTING
- ⑰ PARK IDENTITY SIGNAGE
- ⑱ REPURPOSED MTA TIRE SHOP INTO INCUBATOR SPACE FOR LOCAL CHEFS | STREETFOOD

PERSPECTIVE

3. TREAT CREEK ARROYO "MISSION" AZUL | VÍA VERDE

STRATEGY – ASPHALT OVERLAY EXISTING PAVING AND PAINT A SUPERGRAPHIC EMULATING MISSION CREEK. ADD IMPROVEMENTS TO THE SURFACE CREATING TO ACTIVATE A COMMUNITY DESTINATION . LIGHTING EXTENDS PARK HOURS AND PUBLIC SAFETY. ELEMENTS ARE EASILY RELOCATED IF AND WHEN SFPUC INFRASTRUCTURE WORK TAKES PLACE.

ESTRATEGIA – UNA CONSTRUCCIÓN PERMANENTE QUE DESTAPARÁ EL HISTÓRICO ARROYO "MISSION" CREANDO UNA JARDINERA PLUVIAL DE FORMA CURVILÍNEA. PAVIMENTO PERMEABLE DISEÑADO PARA PROTEGER LA ACTUAL VÍA FERROVIARIA. PROGRAMAR ELEMENTOS QUE CREAN Y ACTIVAN UN DESTINO COMUNITARIO. EL ALUMBRADO PROLONGARÁ LAS HORAS HÁBILES DEL PARQUE Y MEJORARÁ SEGURIDAD PÚBLICA.

TREAT AVENUE GREEN
 SPACE CONCEPTS
 CONCEPTOS DE ESPACIO VERDE – TREAT AVE.
 SAN FRANCISCO, CALIFORNIA





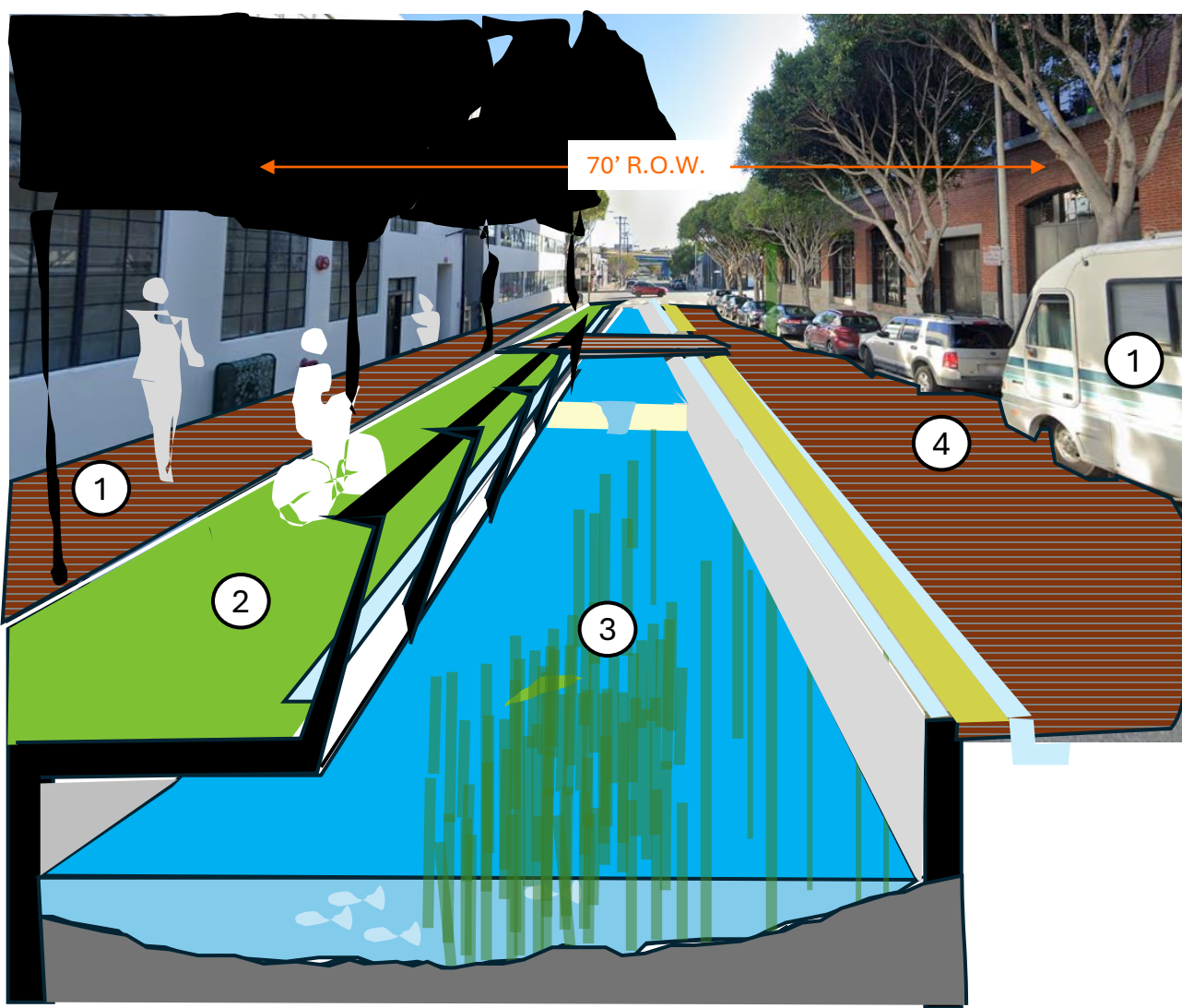
LOWER TREAT AVE - BEFORE



ALAMEDA 70' R.O.W. - BEFORE

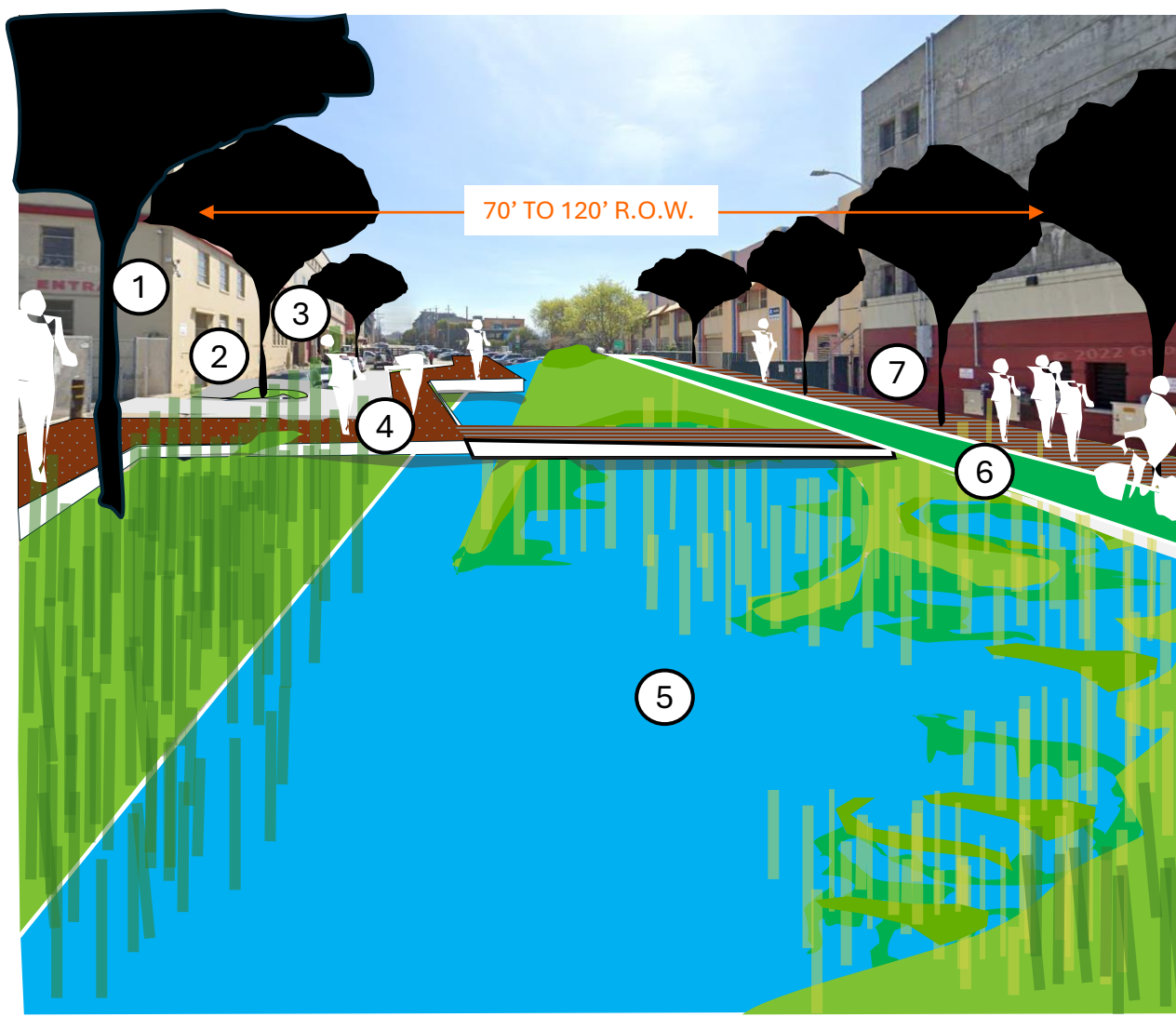


LOWER TREAT AVE 70' R.O.W. - BEFORE



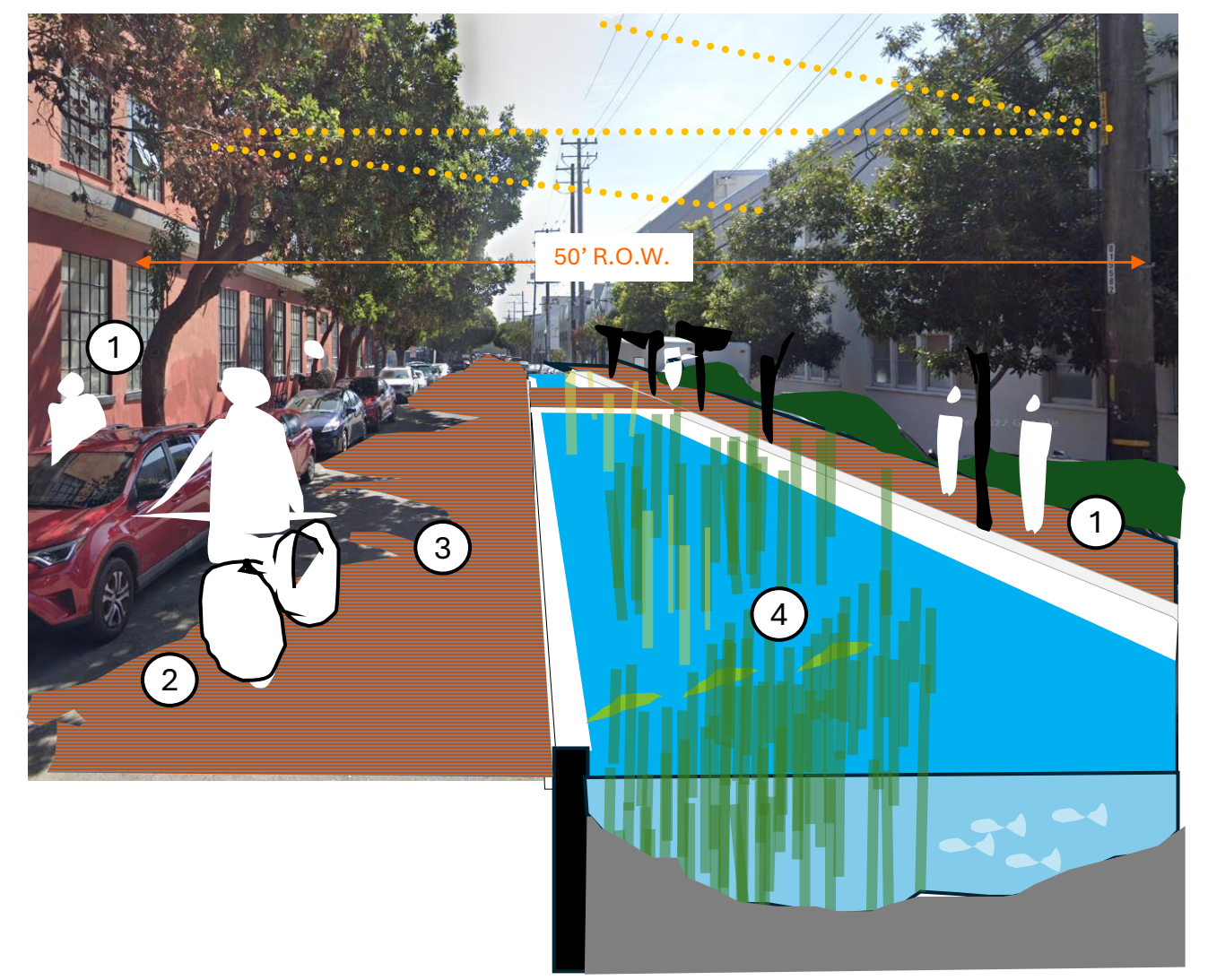
ALAMEDA 70' R.O.W. - AFTER

- ① 6' SIDEWALK
- ② 8' BIKE LANE
- ③ 24' MISSION CREEK BLUE | GREENWAY
- ④ 26' ROADWAY



ALAMEDA 70' R.O.W. - AFTER

- ① PARKING LOT ENTRY
- ② PARALLEL PARKING
- ③ PLUMBING SUPPLY TRUCK TURNING
- ④ 6' MIN. WALKWAY
- ⑤ 24' MISSION CREEK BLUE | GREENWAY
- ⑥ 8' BIKE LANE
- ⑦ 6' SIDEWALK



LOWER TREAT AVE 70' R.O.W. - AFTER

- ① 6' SIDEWALK
- ② 26' ROADWAY
- ③ SHARROW BIKE LANE
- ④ 12' MISSION CREEK BLUE | GREENWAY



REFERENCE

4. MISSION CREEK BLUE | GREENWAY ARROYO "MISSION" AZUL | VÍA VERDE

STRATEGY – DAYLIGHT HISTORIC MISSION CREEK EMPLOYING GREEN INFRASTRUCTURE PRINCIPLES TO SOLVE THE AREAS DRAINAGE DEFICIENCIES. WHILE CREATING A LINEAR URBAN DESTINATION PROVIDING CONNECTIVITY FROM LOWER MISSION TO THE BAY, A NEW LIFE FOR ADJACENT PRIVATE PROPERTY AND A REMARKABLE TOURISM DESTINATION FOR THE CITY.

ESTRATEGIA – DESTAPAR EL HISTÓRICO ARROYO "MISSION" UTILIZANDO MÉTODOS DE INFRAESTRUCTURA "VERDE" PARA RESOLVER LAS DEFICIENCIAS DEL DESAGÜE. A LA VEZ CREATO UN DESTINO URBANO LINEAL QUE PROVEE UNA CONEXIÓN DESDE EL SUR DE LA MISIÓN HASTA LA BAHÍA. DAR VIDA NUEVA A LAS PROPIEDADES ADYACENTES Y UN DESTINO TURÍSTICO EXCEPCIONAL PARA LA CIUDAD.

TREAT AVENUE GREEN
SPACE CONCEPTS
CONCEPTOS DE ESPACIO VERDE - TREAT AVE.
SAN FRANCISCO, CALIFORNIA

